



# WHAT IS PREMIUM TECH TOOL?

PTT is a toolbox that bundles diagnostic and repair applications together making it a one stop shop for the technicians. The main purpose of PTT is to support the diagnostic & repair process and to make it easier for technicians to work with the tools provided.

PTT provides access to vehicle and parameter programming, service information and diagnostics. With one-time vehicle identification it is not necessary to re-identify the vehicle in each application. Also by having all necessary applications easily available through the PTT menu, PTT is easier and more efficient to use over traditional methods.



PTT is a toolbox that bundles diagnostic & repair applications together.

## PTT BUSINESS BENEFITS

PTT is designed to provide technicians with a consolidated toolbox, which has been designed to be user friendly with fast and easy access and no significant training requirements.

Depending on access level, the following applications may be available in PTT:

Sub-Application	Dual Dealer	Mack Dealer	Volvo Dealer	Fleet/Customer
VCADS	X	X	X	X
Guided Diagnostics	X	X	X	X
Impact	X		X	X
EIS	X	X		
V-MAC Online	X	X		
TDP	X	X	X	
Mack Service DVD	X	X		X
Impact DVD	X		X	X

### PTT will provide technicians with:

#### One time vehicle identification

By identifying the vehicle from the beginning, central data will be downloaded and available throughout the systems in PTT.

#### Quick and easy access to fault codes

Fault codes are read out automatically from the vehicle.

#### Symptom analysis

Problems correctly resolved the first time by having a more accurate diagnosis.

#### Targeted instructions for the technician

Short, concise and well-structured instructions based on a given template for easy recognition.

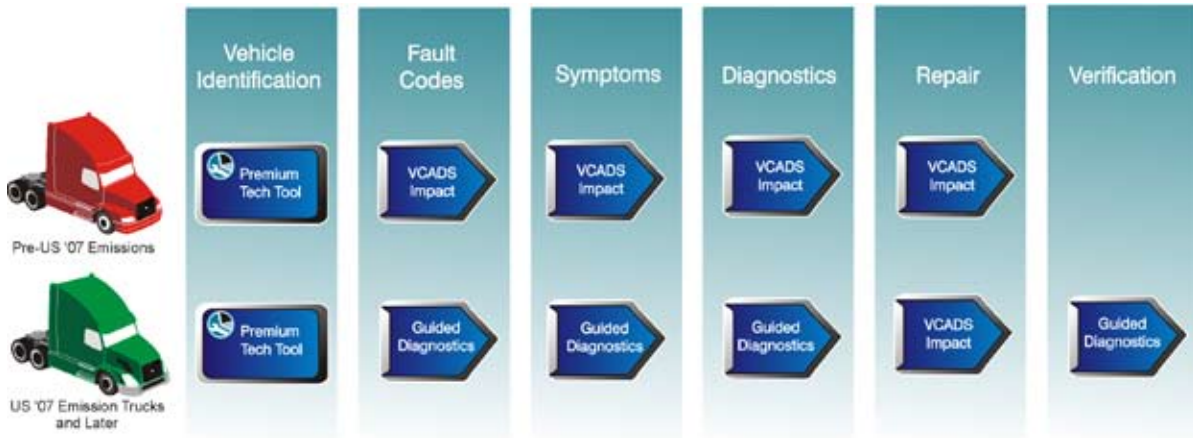


# PTT WORKFLOW - VOLVO

The PTT workflow is always started by Vehicle Identification, but from there on the tools may vary depending on the version of the vehicle electrical system.

**Pre-US '07 emission trucks:** Traditional tools such as VCADS and Impact are used throughout the process, with the only difference being that they are handled in the PTT user interface.

**US '07 emission trucks and later:** Full support in Guided Diagnostics, except when in the “repair” phase, where VCADS and Impact are the supporting tools.



## Vehicle Identification

PTT is the common entry point for all Vehicle Identification, regardless of emissions level.

## Fault Codes

Guided Diagnostics reads fault codes from US '07 emission trucks and later.

For pre-US '07 vehicles VCADS Pro is used to read fault codes.

## Symptoms

Presentation and analysis of symptoms are only available for US '07 emission trucks and later in Guided Diagnostics. For previous emission levels, information is found in Impact checklists.

## Diagnosis

Guided Diagnostics provides full support for US '07 emissions trucks and later. For previous emission levels, refer to Impact and VCADS.

## Repair

VCADS and Impact are supporting tools for repair. This is common for all emission levels.

## Verification

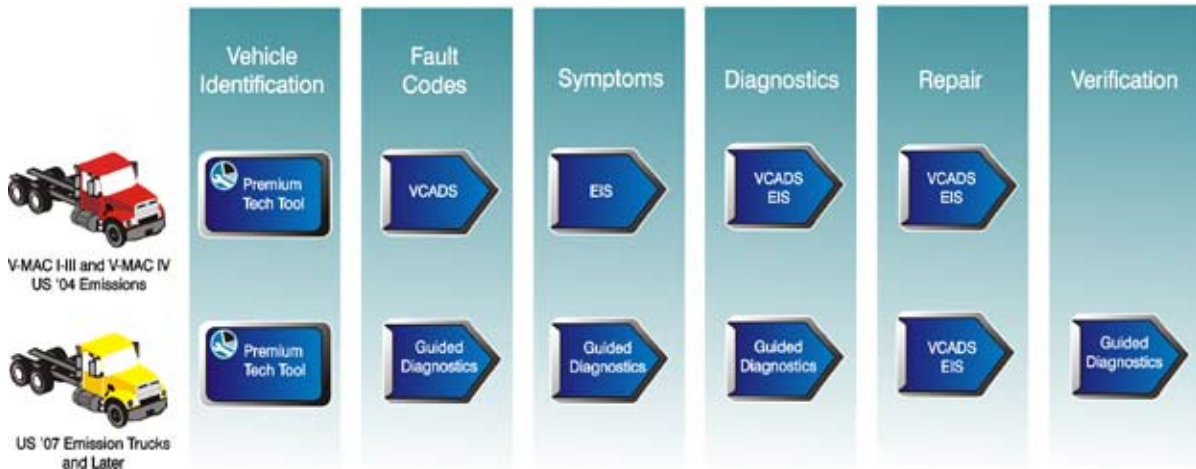
Guided Diagnostics supports US '07 emissions trucks and later with information to verify that the problem has been solved.

# PTT WORKFLOW - MACK

The PTT workflow is always started by Vehicle Identification, but from there on the tools may vary depending on the version of the vehicle electrical system.

**For V-MAC I-III, ITC and V-MAC IV US '04 emissions:** Traditional tools such as VCADS and EIS are used throughout the process, with the only difference that they are handled in the PTT user interface.

**For V-MAC IV US '07 emissions:** Full support in Guided Diagnostics, except for the “repair” phase where VCADS and EIS are the supporting tools.



## Vehicle Identification

PTT is the common entry point for all Vehicle Identification, regardless of emissions level.

## Symptoms

Presentation and analysis of symptoms are only available for US '07 emission trucks and later in Guided Diagnostics. For previous emission levels, information is found in EIS.

## Fault Codes

Guided Diagnostics reads fault codes from US '07 emission trucks and later. For pre-US '07 vehicles VCADS is used to read fault codes.

## Diagnosis

Guided Diagnostics provides full support for US '07 emissions trucks and later. For previous emission levels, refer to VCADS and EIS.

## Repair

VCADS and EIS are supporting tools for repair. This is common for all emission levels.

## Verification

Guided Diagnostics supports US '07 emissions trucks and later with information to verify that the problem has been solved.

# LOG IN & MAIN MENU

Premium Tech Tool is started from the Start Menu or by clicking the PTT icon on the desktop. After logging in, the Identification of Vehicle view is displayed, which is also the PTT entry page. The Main Menu is always available in the upper right-hand corner and gives you easy access to all services in PTT.

**Sub-applications**  
The applications in Premium Tech Tool, i.e. Guided Diagnostics, and VCADS .

**Help**  
Here you can access the help documentation.

**Log off**  
Log off Premium Tech Tool.

**Main Menu**  
In the main Menu you can easily move between the different PTT services.

**Settings**  
Parameters such as default language, dial up settings for modem and interface adapter settings.

**Exit**  
Exit Premium Tech Tool.

# VEHICLE IDENTIFICATION

The Vehicle Identification is the common entry point for all users, regardless of vehicle emissions level. You only have to identify the vehicle once to be able to use the vehicle information in all sub-applications. There are three different ways to identify a vehicle; see below.

**Model Selection**  
The Model Selection tab, within the vehicle identification screen, is used to identify a vehicle based on a model when NOT connected to a vehicle or Central Systems.

**Recently Selected**  
The 50 most recently selected vehicles can be accessed for identification from this tab.

**Chassis Selection**  
The Chassis Selection tab is used to identify a vehicle when a physical connection and/or central systems is present. When connected to a vehicle, PTT automatically identifies the vehicle.

To retrieve information from Central Systems to present chassis specific information, a Chassis ID or VIN number is entered. The PC must have a connection to Central Systems. This is only used if you don't have a physical connection to a vehicle.

Status	Chassis Series	Chassis Number	Central Data	Company	Model	Selected At	Electrical System	VIN	Reg. No.	Machine Type
N		483854		Volvo Tru...	VN	6/21/2007 2:08	VERSION2	4V4MC9DG47N483854		Not applicable

Remove Central Data   Refresh

Chassis Selection   Model Selection   Recently Selected

Available:

Status	Chassis S...	Chassis Number	Company	Model	Reg. No.

Refresh

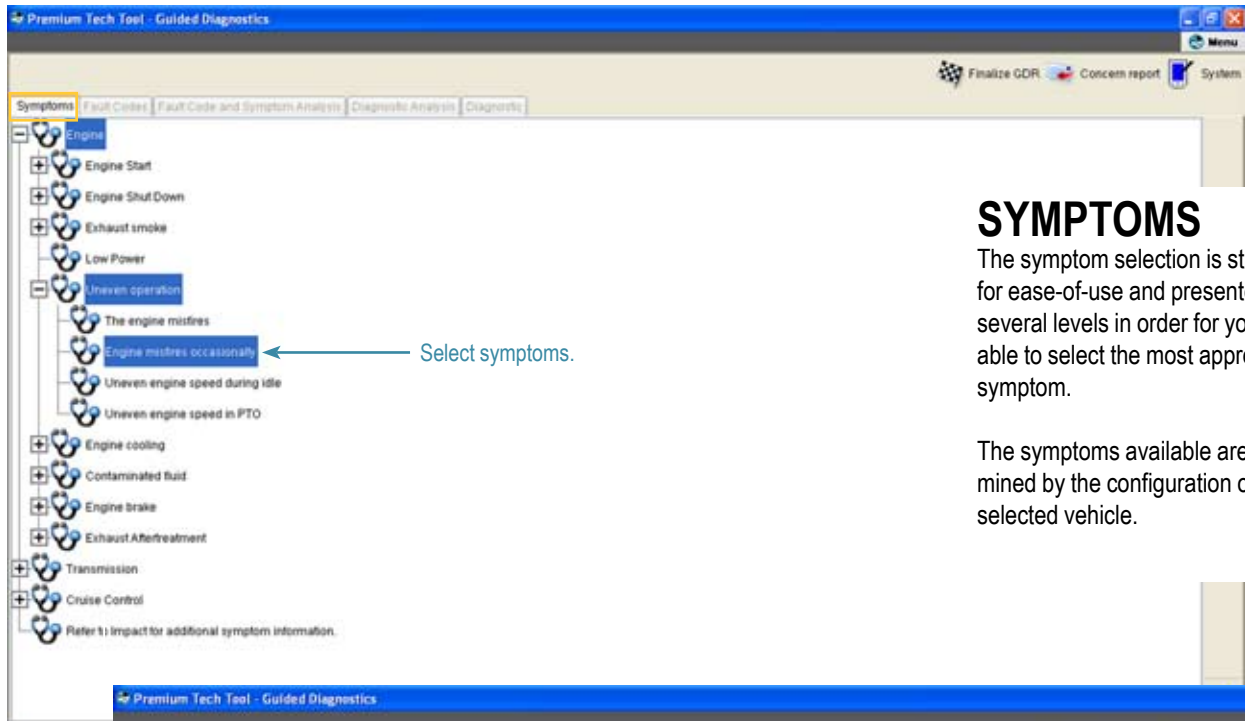
Or Chassis ID: Series: N - Number: 483854   Or Reg. Number:   Or VIN:

Chassis ID: N-483854   VIN: 4V4MC9DG47N483854   Company: Volvo Trucks   Model: VN   Connected



# GUIDED DIAGNOSTICS

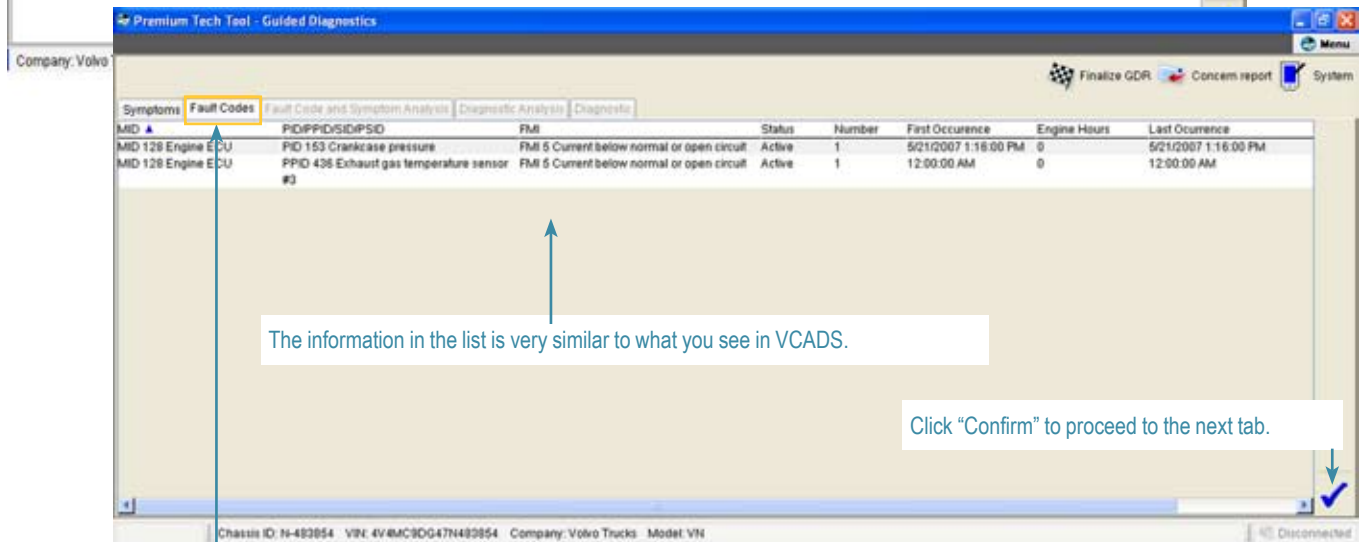
Guided Diagnostics is an application that presents step-by-step instructions for fault code and symptom fault tracing that pinpoints the cause of the fault. Guided Diagnostics is organized into a series of tabs outlining a diagnostic process.



## SYMPTOMS

The symptom selection is structured for ease-of-use and presented with several levels in order for you to be able to select the most appropriate symptom.

The symptoms available are determined by the configuration of the selected vehicle.

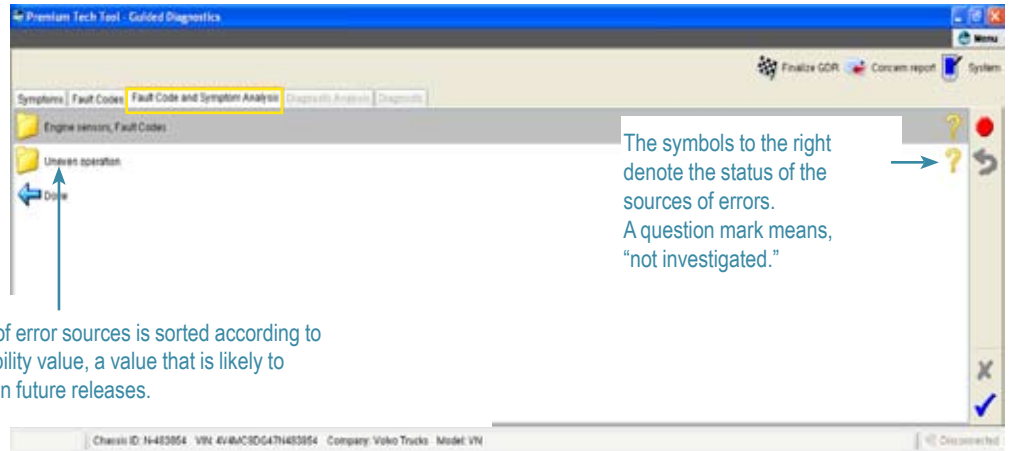


## FAULT CODES

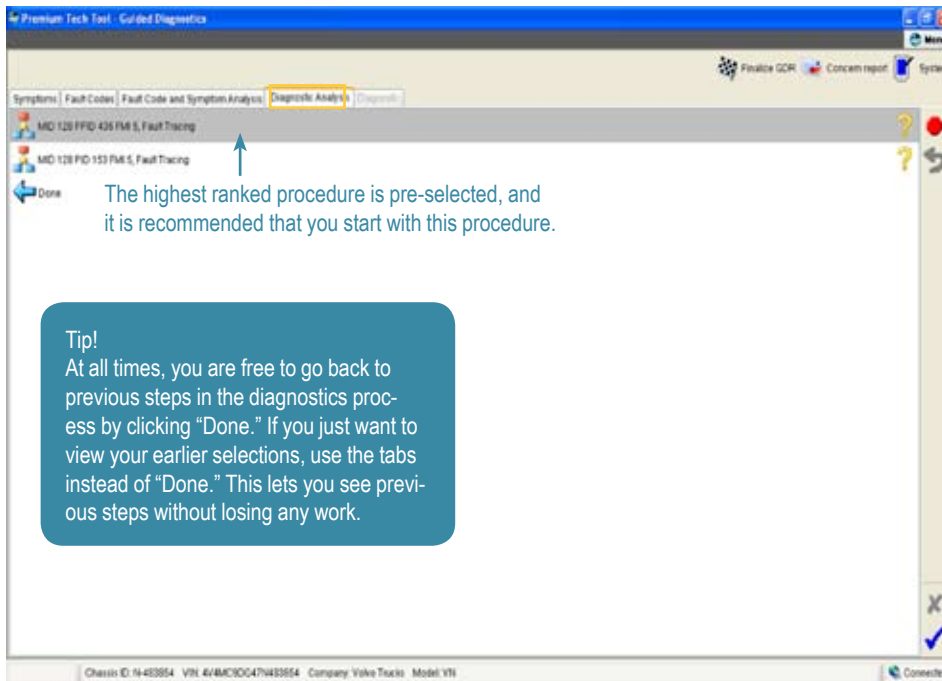
When the vehicle has been identified and the symptoms have been selected (if applicable), the Fault Codes tab in Guided Diagnostics will be auto-populated. You can also see that the tabs in Guided Diagnostics follow the PTT workflow.

# FAULT CODE AND SYMPTOM ANALYSIS

After symptom and fault code selection, the fault areas are presented and sorted according to diagnostic priority.



The list of error sources is sorted according to a probability value, a value that is likely to change in future releases.

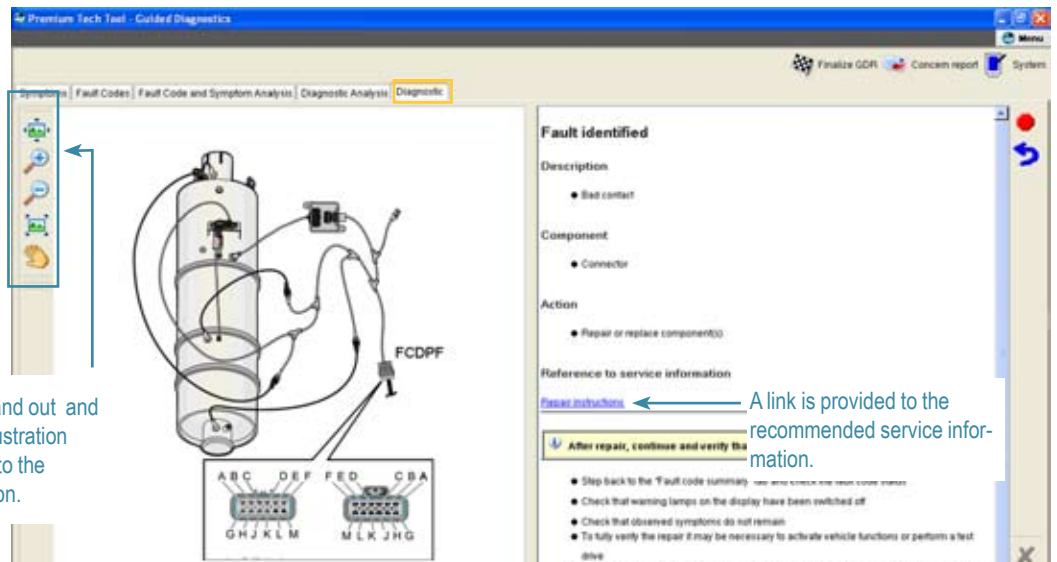


# DIAGNOSTIC ANALYSIS

This view lists the recommended diagnostic procedures to use in order to troubleshoot the selected problem area. The procedures are recommended by Guided Diagnostics based on the analysis of the combination of fault codes and symptoms. This list is also sorted beginning with the most probable procedure first.

# DIAGNOSTICS

The Diagnostic tab presents a description of the fault, on which components the fault has occurred and step-by-step diagnostic procedures, as well as links to applicable repair information.

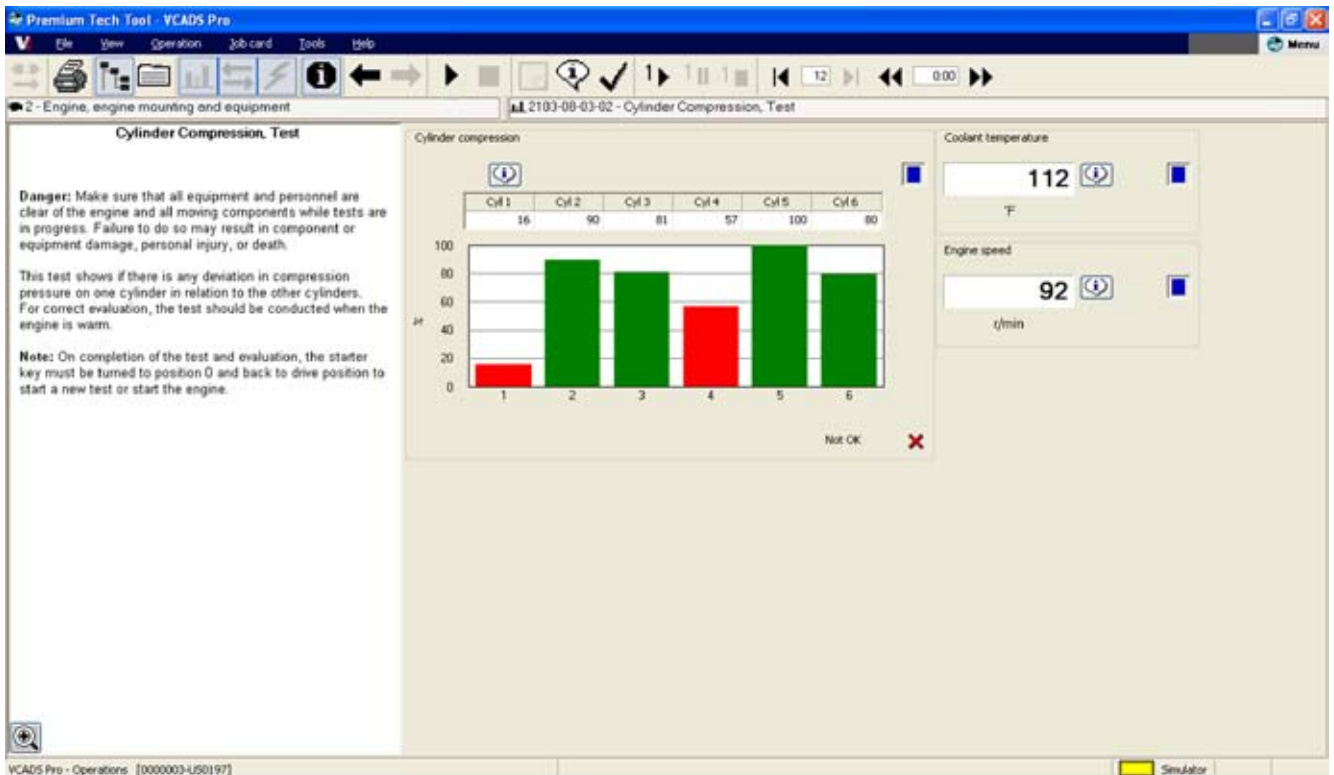
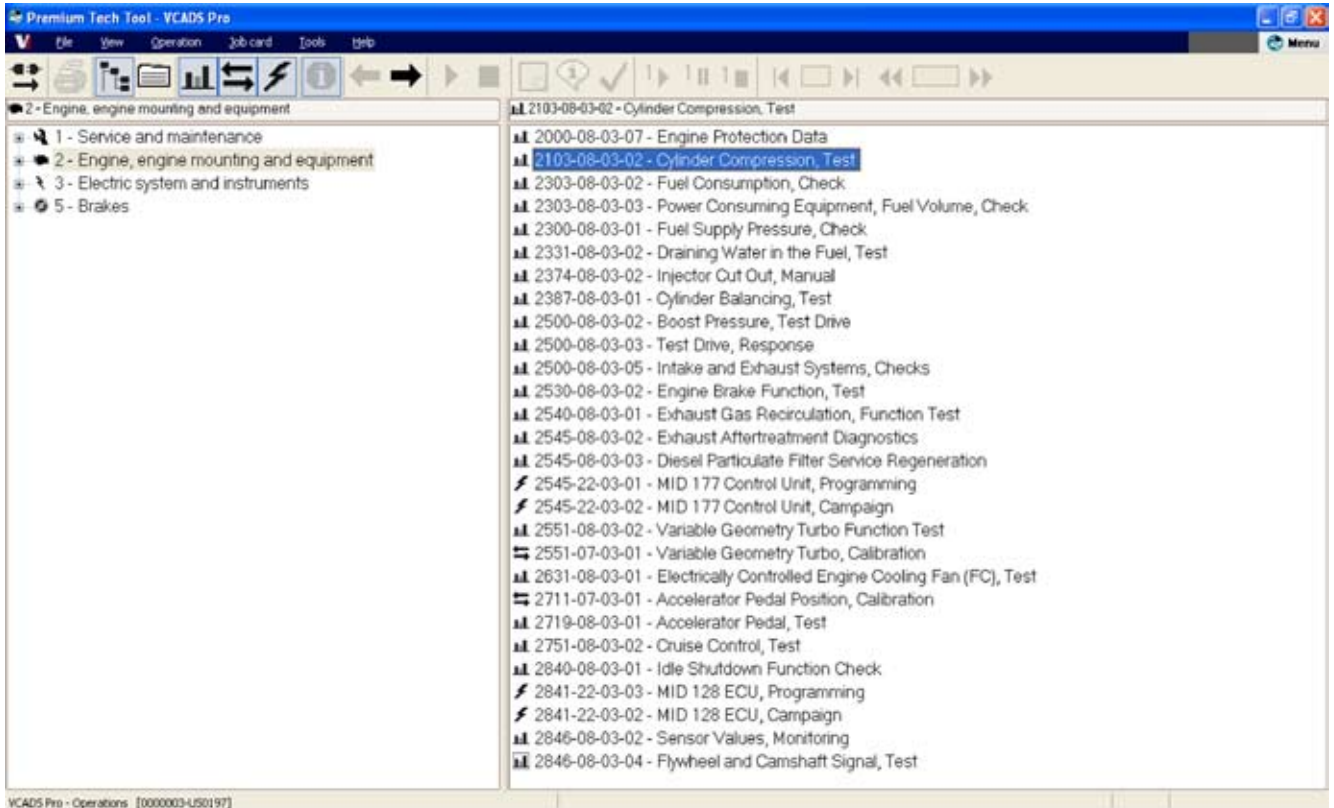


You can zoom in and out and pan around the illustration using the buttons to the left of the illustration.

A link is provided to the recommended service information.

# VCADS

VCADS - Vehicle Computer Aided Diagnostics System - is an application that reads and reports fault codes, performs tests and calibrations and is used for customer parameter programming. Once a vehicle is identified using the PTT Vehicle Identification screen, the user may start VCADS from the PTT menu. There is no need to re-identify the vehicle in VCADS.

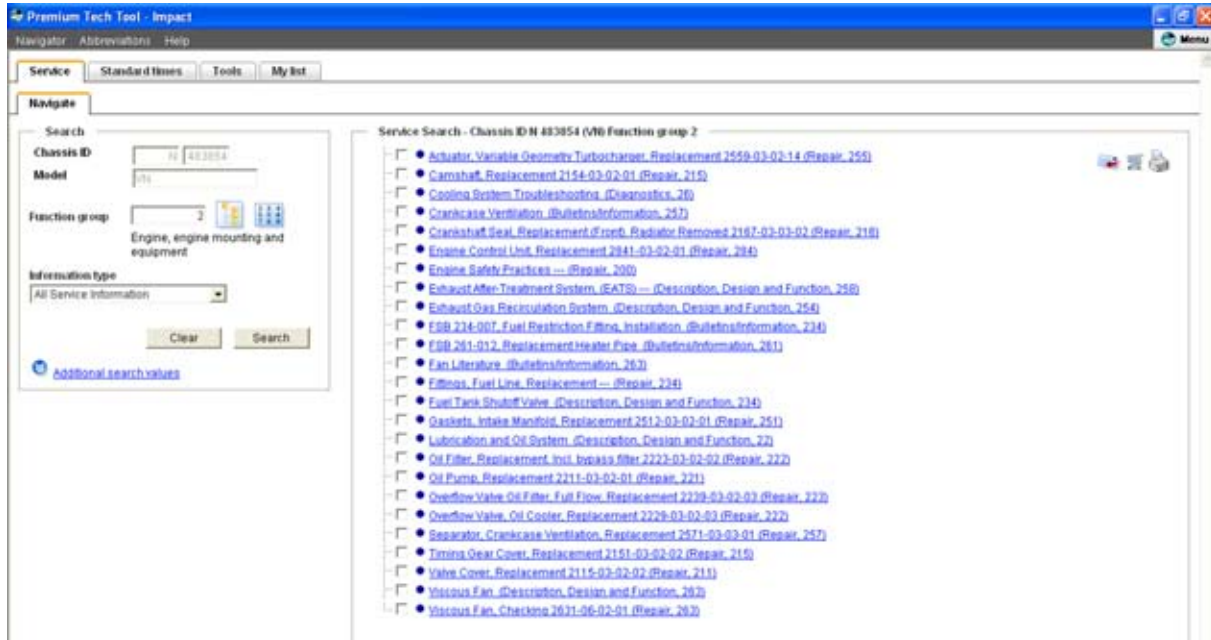




# IMPACT - VOLVO ONLY

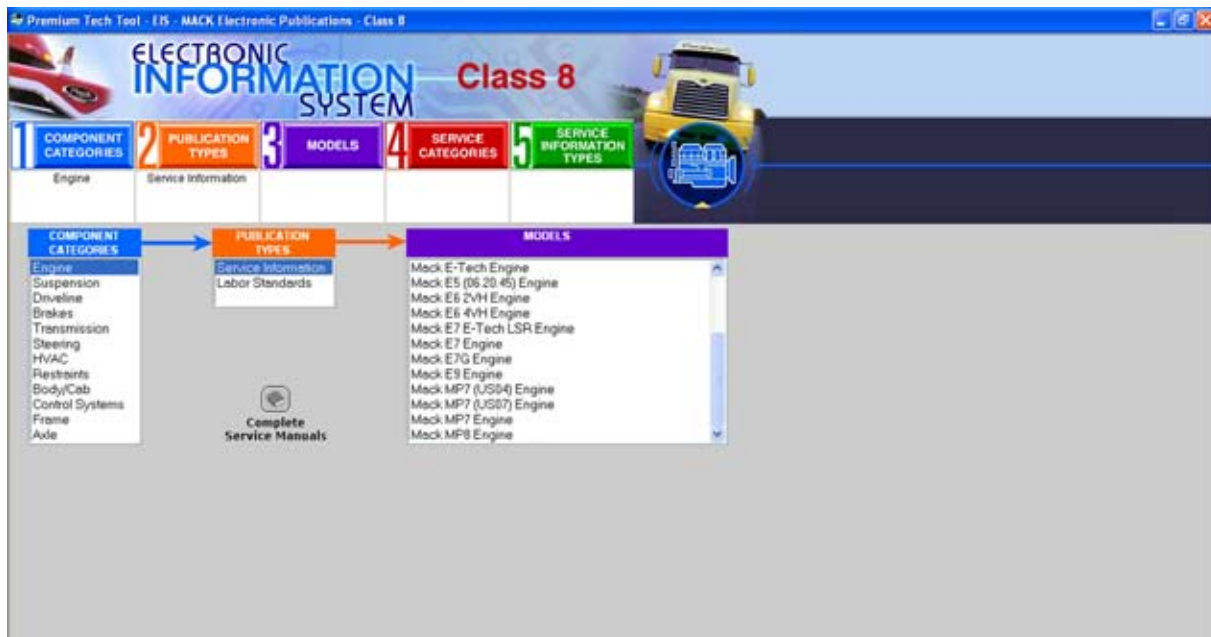
Impact is the Parts catalog and Service Information application for Volvo Trucks. PTT offers two options for accessing the information: Online access or a local installation of the Impact DVD

When working with fault tracing in Guided Diagnostics, the repair information link in Guided Diagnostics will link to Impact 3.0 (when online) or Impact DVD (if installed). This makes PTT a very flexible solution whether you are online or offline.



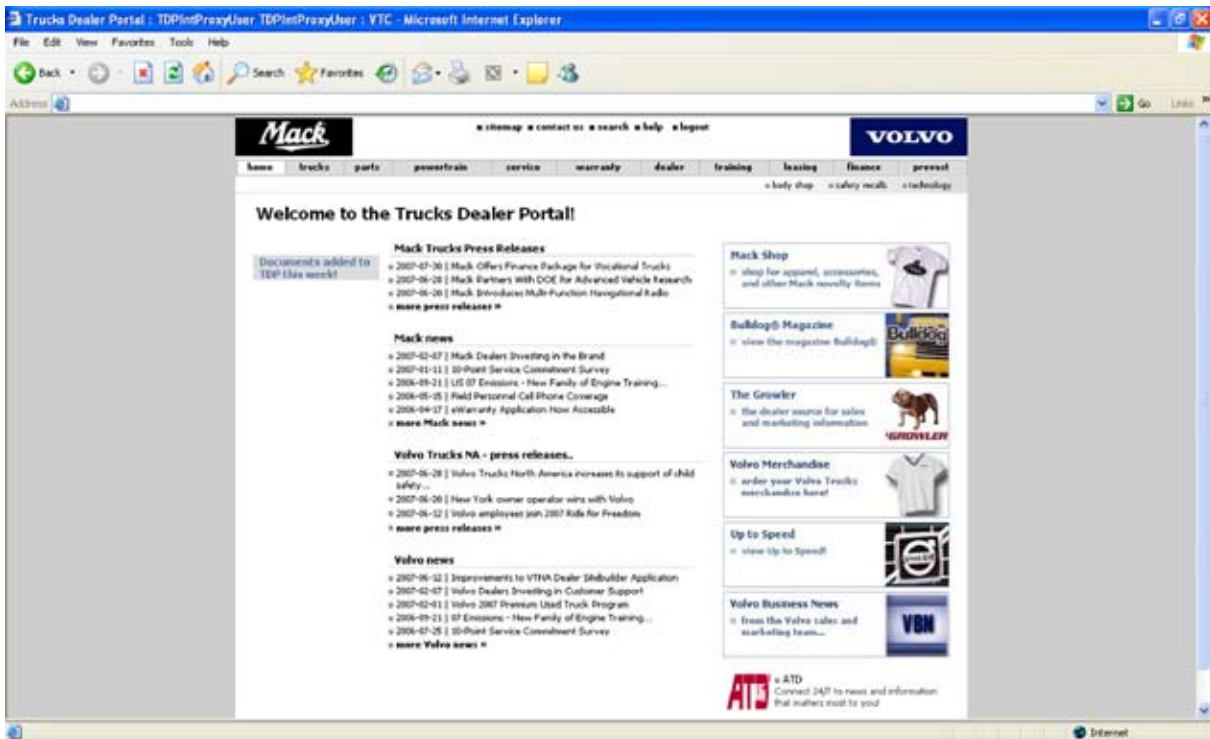
# ELECTRONIC INFORMATION SYSTEM - MACK ONLY

Electronic Information System (EIS) is a web-based application that provides access to Class 8 and Medium Duty service information and labor standards. When operating offline, the Mack Service Publication DVD can be used to access service information. When working with Fault Tracing in Guided Diagnostics, the repair information link will take you to either EIS (if online) or Mack Service Publication DVD #1 if offline (and the DVD is in the DVD drive.)



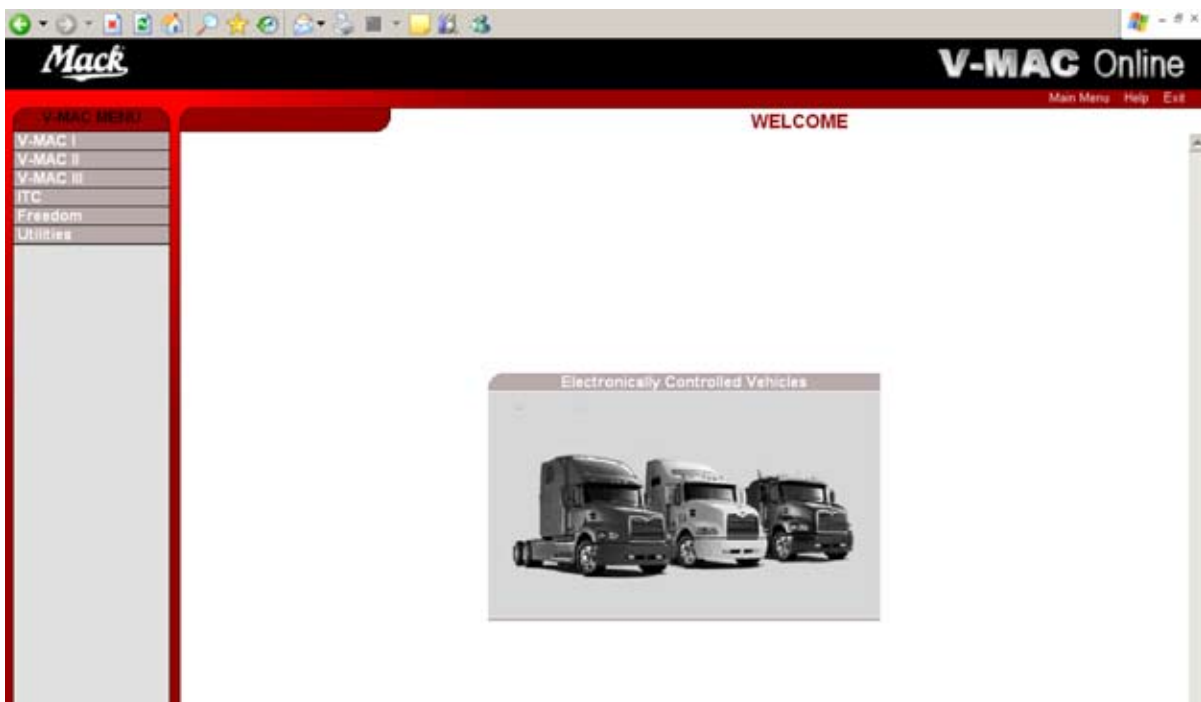
# TDP - TRUCKS DEALER PORTAL

Trucks Dealer Portal is the dealer's single source for product, warranty, parts and service information. TDP is the main source for dealers to find the latest news and information as well as key applications. TDP also contains links to key industry and vendor web sites.



# V-MAC® ONLINE - MACK ONLY

V-MAC Online is a dealer-only web-based application that supports Mack Trucks legacy class 8 vehicles, ITC vehicles and FREEDOM Mack medium duty vehicles. V-MAC Online is used in conjunction with Dealer Programming software.



## PTT RELEASES

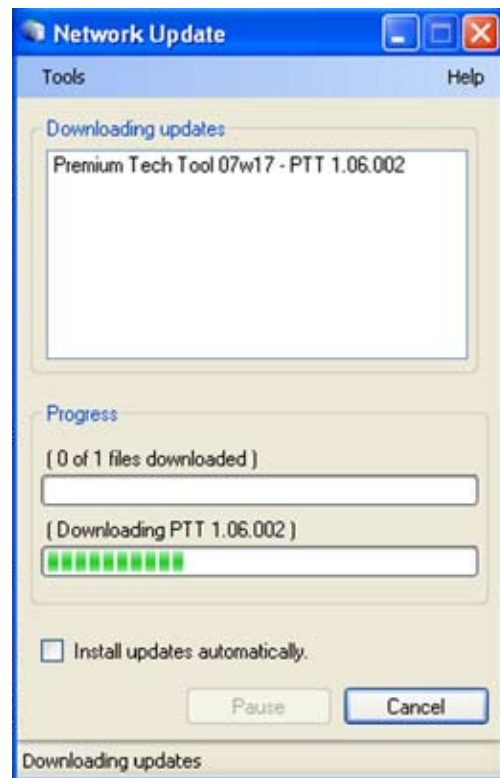
PTT is updated and released several times a year.

For major updates a DVD will be sent to your administrator who will update your PTT computer. Major updates are released in the spring and fall of every year. For minor updates PTT is updated using a network connection.

## Network Updates

The system will continuously search for updated versions and the latest PTT version will be downloaded to your PC. You will be notified when there are updates to download.

- Icon in lower right hand corner when update is available
- Possible to configure for Dial-Up/LAN
- Configurable for automatic/manual download/updates
- Will continue to download a package if interrupted



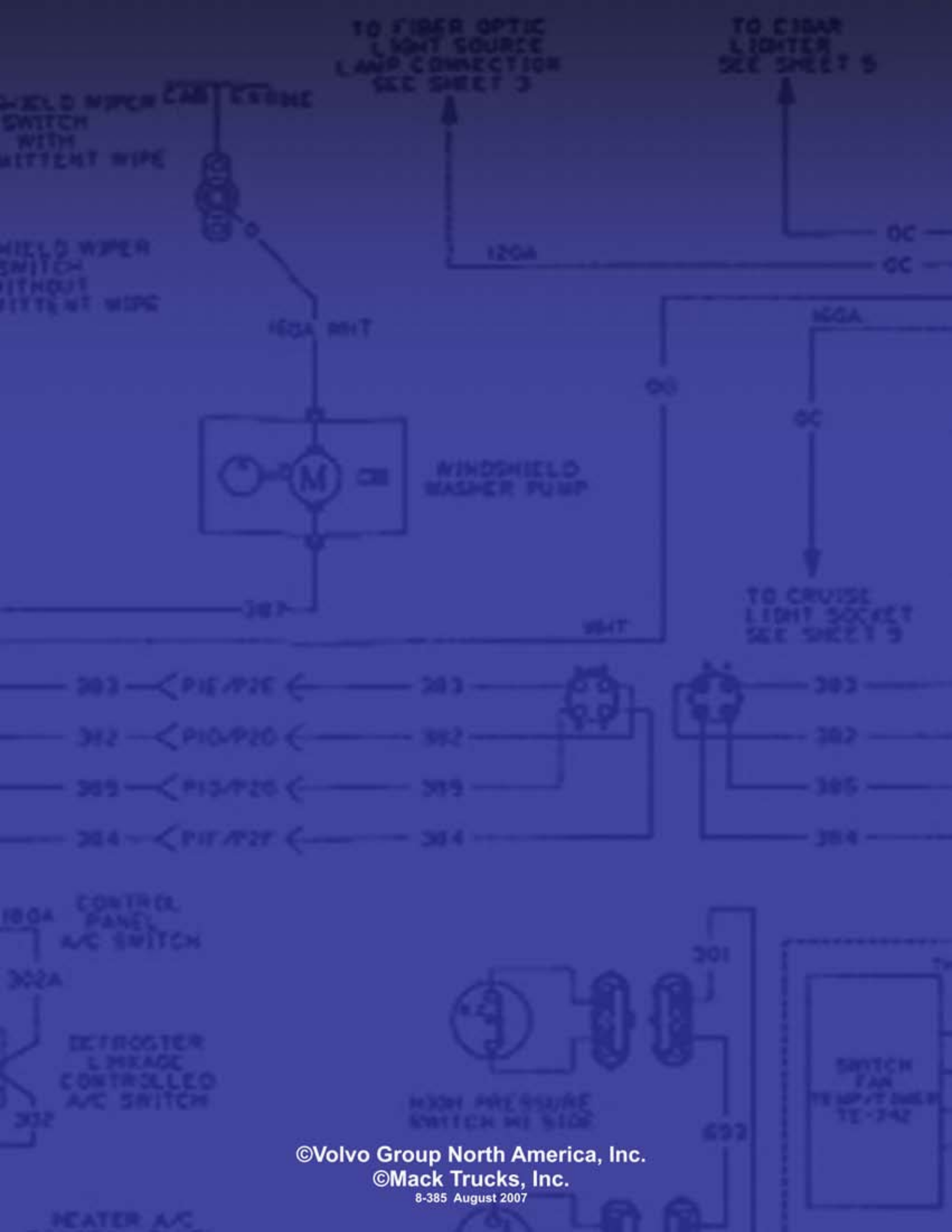
## PTT SUPPORT



1-336-393-2425



dlrcomm@volvo.com



©Volvo Group North America, Inc.

©Mack Trucks, Inc.

8-385 August 2007